

# BELLA TERRA P.U.D. PLAT NO. 4

BEING A REPLAT OF A PORTION OF TRACT "F" AND A PORTION OF TRACT "B",  
BELLA TERRA P.U.D. PLAT I, AS RECORDED IN PLAT BOOK 94, PAGES 13 THROUGH 28,  
PUBLIC RECORDS OF PALM BEACH COUNTY, FLORIDA AND LYING IN SECTION 36, TOWNSHIP 43 SOUTH  
RANGE 41 EAST, VILLAGE OF ROYAL PALM BEACH, PALM BEACH COUNTY, FLORIDA.  
JANUARY, 2003 SHEET 3 OF 5

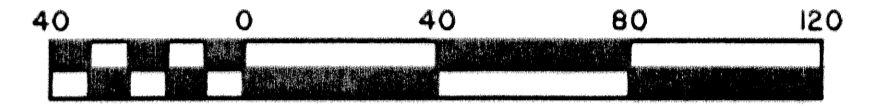
COUNTERPOINT ESTATES PLAT NO. 9  
(P.B. 45, PAGES 106 - 108)

N. LINE OF THE NW 1/4 OF SECTION 36, TOWNSHIP 43 S, RANGE 41 E  
PER PALM BEACH COUNTY SECTIONAL DATA

P.O.B.  
NORTHWEST CORNER OF  
BELLA TERRA P.U.D. PLAT NO. 1  
(P. B. 94, PGS. 13 - 28)

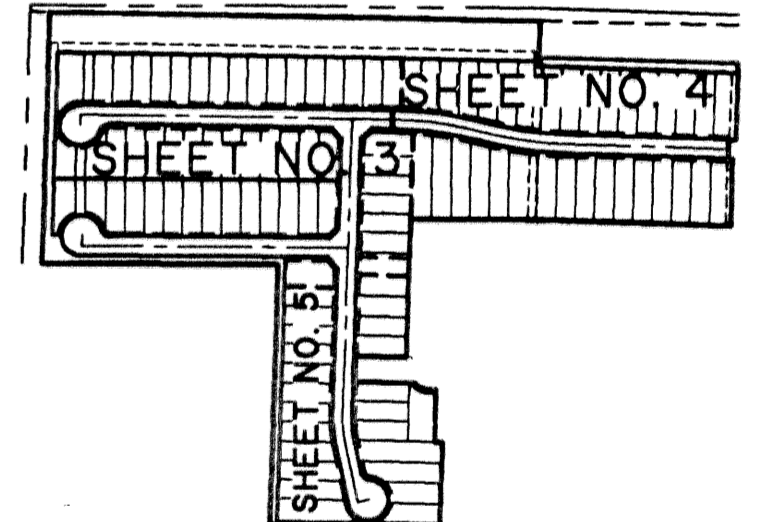
NORTH LINE OF THE NW 1/4 OF SECTION 36, TOWNSHIP 43 S, RANGE 41 E  
AS LAID OUT AND IN USE AND PER THE PLAT OF COUNTERPOINT ESTATES  
PLAT NO 9 (P.B. 45, PAGES 106-108) AND PER THE PLAT OF COUNTERPOINT  
ESTATE PLAT NO II (P.B. 48, PAGES 165-166)

STATE OF FLORIDA      SS  
COUNTY OF PALM BEACH  
THIS PLAT WAS FILED FOR RECORD AT \_\_\_\_\_  
M. THIS DAY OF \_\_\_\_\_ 2003  
AND DULY RECORDED IN PLAT BOOK NO. \_\_\_\_\_  
ON PAGE \_\_\_\_\_  
DOROTHY H. WILKEN, CLERK OF THE CIRCUIT COURT  
BY \_\_\_\_\_ O.C.



Scale 1" = 40'

MATCH TO SHEET NO. 4

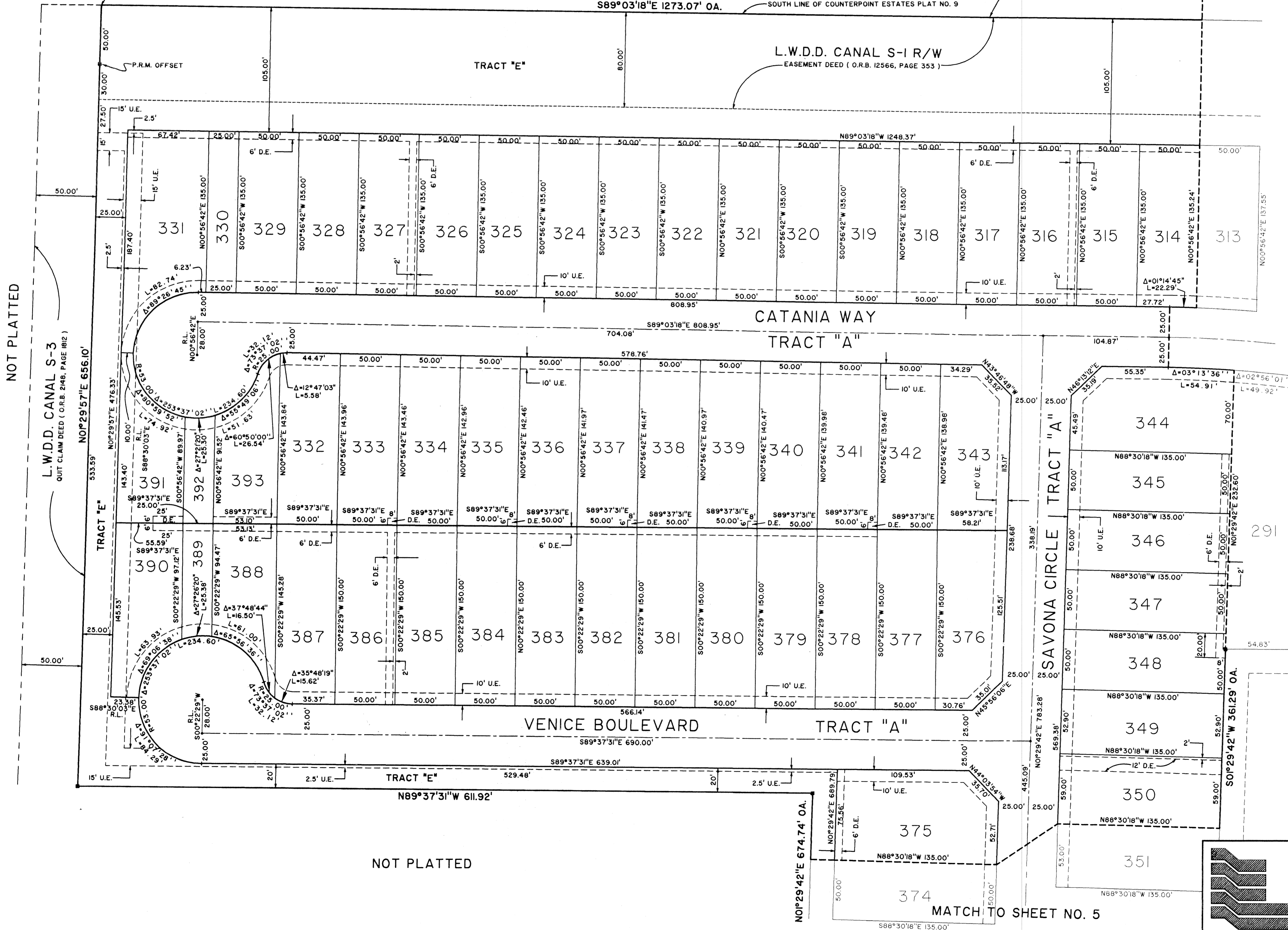


KEY MAP  
NOT TO SCALE

TRACT "W-2"  
BELLA TERRA P.U.D. PLAT NO. 1  
(P. B. 94, PGS. 13 - 28)

Landmark Surveying & Mapping Inc.  
1850 Forest Hill Boulevard  
Ph. (561) 433-5405 Suite 100 W.P.B. Florida  
LB # 4396

BELLA TERRA P.U.D. PLAT NO. 4



NOT PLATTED

NOT PLATTED

MATCH TO SHEET NO. 5